



# ***Telscombe Town Council Annual Report 2018-2019***



**Telscombe Civic Centre, 360 South Coast Rd, Telscombe Cliffs,  
East Sussex, BN10 7ES**

**01273 589777**

**[enquiries@telscombetowncouncil.gov.uk](mailto:enquiries@telscombetowncouncil.gov.uk)**

**[www.telscombetowncouncil.gov.uk](http://www.telscombetowncouncil.gov.uk)**



## **CONTENTS**

<b>Page 3</b>	<b>Mayor's Report</b>
<b>Page 4</b>	<b>Councillors</b>
<b>Page 5</b>	<b>Understanding How Councils Work</b>
<b>Page 6</b>	<b>Telscombe Town Council &amp; Committees</b>
<b>Page 7</b>	<b>Committees</b>
<b>Page 8</b>	<b>Staff</b>
<b>Page 9 &amp; 10</b>	<b>Finance</b>
<b>Page 11</b>	<b>Community Engagement</b>
<b>Page 12 &amp; 13</b>	<b>The Civic Centre</b>



### **A MESSAGE FROM THE MAYOR, CLLR DARYLL BRINDLEY**

It has been a great honour and privilege to be the Mayor of Telscombe for the last year.

During that time I have attended:- the RNLI fete in Newhaven; Blind Veteran's fete in Ovingdean; a school talent competition at Peacehaven Heights Junior School; a Civic Service for my term as Mayor at the Telscombe Community Church in Buckhurst Road; the Deans Senior Tea Club held at the Civic Centre as often as I could; the Council-run children's Halloween party, fabulous firework display, Macmillan coffee morning and many bingo evenings; the Lewes bonfire celebrations; the Remembrance Day parade and service at the Peacehaven & Telscombe War Memorial; the Peacehaven Players Christmas pantomime; Peacehaven Community School's musical Grease and various carol concerts. The highlight was the Christmas day breakfast morning held at the Civic Centre and the helpers on the day and before-hand who offered support were fantastic. I also took part in the unveiling of the Tommy statue in Peacehaven. My final event is my end of term celebration party on Saturday 13<sup>th</sup> April, featuring the wonderful Mayor's Misfits singing live.

I would like to express my gratitude to all my fellow Councillors and Council staff for all their help and advice during my term, as without all their help my charity fund would not be as healthy as it is.

Cllr Daryll Brindley  
Mayor of Telscombe

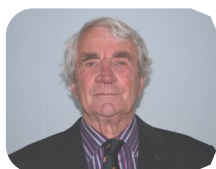
April 2019





## **Councillors**

The Town Council has 13 Councillors, eight in the Telscombe Cliffs Ward:-



Cllr Tim Armour



Cllr Daryll Brindley



Cllr Andy Loraine



Cllr Gwen Maskell



Cllr Ron Maskell



Cllr Andy Smith



Cllr Joanna Wilkins



Cllr Isobel Sharkey

and five in the East Saltdean ward:-



Cllr Job Harris



Cllr Andrew Mendoza



Cllr Brian Page



Cllr David Wright



Cllr Christine  
Robinson

New Councillors were elected in May 2015, some of which had served the Town previously, and they stay in office for 4 years. However, following 2 Councillor resignations in December 2017, 2 new Councillors were elected at a by-election at the beginning of March 2018, Cllrs Christine Robinson & Isobel Sharkey.

The Mayor is appointed at the Annual Council meeting in May. Councillor Daryll Brindley was appointed as Mayor and Councillor Tm Armour as Deputy Mayor in May 2018 for the 2018/19 year.

A Councillors' surgery is held on the first Saturday of each month from 10-11am at the Telscombe Civic Centre where you can pop in (no appointment necessary) and meet your local Councillors and discuss any issues or thoughts with them.

## **UNDERSTANDING HOW COUNCILS WORK**



There are three tiers of local government:-

County Councils

District, Borough or City Councils

Parish, Community and Town Councils

In some parts of the country, mainly cities, there's just 1 (unitary) tier of local government providing all the local services.

### **County Councils**

They are responsible for services across the whole of a county, e.g:

- \* education
- \* transport
- \* fire and public safety
- \* social care
- \* libraries
- \* waste management
- \* trading standards

### **District, Borough and City Councils**

They cover a smaller area than county councils. They're usually responsible for services like:

- \* rubbish collection
- \* recycling
- \* Council Tax collections
- \* housing
- \* planning applications

### **Parish, Community and Town Councils**

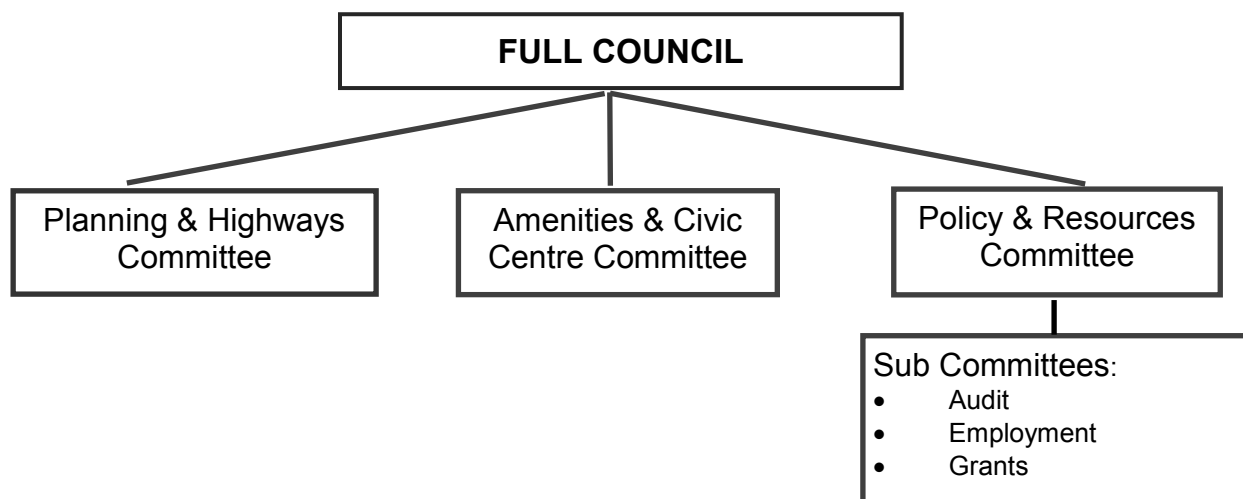
They operate at a level below district and borough councils and in some cases, unitary authorities.

They're elected and can help on a number of local issues and can provide:

- \* allotments
- \* public clocks
- \* bus shelters
- \* community centres
- \* play areas and play equipment
- \* grants to help local organisations
- \* consultation on neighbourhood planning

In our area we have East Sussex County Council, Lewes District Council and Telscombe Town Council.

# TELSCOMBE TOWN COUNCIL



Telscombe Town Council serves Telscombe Cliffs, East Saltdean and Telscombe Village and has approximately 7,400 residents.

The Town Council owns and manages important local community facilities including the Civic Centre on the South Coast Road, Chatsworth Park including two equipped play spaces, the Robert Kingan play space in East Saltdean, and Telscombe Tye (211 acres of open access Common land). It is also responsible for grass verge cutting and owns and maintains some bus shelters and street lights. It has several committees detailed above which oversee the various aspects of the Council's responsibilities.

## **Meetings**

Council and Committee meetings are held on a bi-monthly basis. A list of meetings dates can be found on our website or in our notice boards. Members of the public are welcome to attend meetings and there is a 15 minute period at the beginning of each meeting for public questions.



## **Policy & Resources Committee**

This Committee oversees the management of the Council's functions and finances. It works to keep expenditure down over the year, but still maintain a quality level of service. It developed a five year business plan which sets out the towns values, objectives and priorities for allocating resources which is updated regularly to ensure targets are met and new objectives are added. The business plan is available to view on the Council's website, [www.telscombetowncouncil.gov.uk](http://www.telscombetowncouncil.gov.uk).



## **Policy & Resources Committee (Contd)**



The Council owns a community flock of 69 ewes at present (usually 100), which provide additional income to the Council. Due to ewe losses, Lewes District Council had proposed a Public Space Protection Order for the Tye, but following public consultation they decided not to enforce the order, although they may in the future if they feel it is necessary. The Committee has updated Council policies, including the Freedom of Information in accordance with national guidelines. The Council's assets total in excess of £1.7m.

## **Amenities & Civic Centre Committee**

The Amenities and Civic Centre Committee manages Chatsworth Park which contains two play spaces and the Robert Kingan play space in Bannings Vale, East Saltdean. These 3 playspaces have just undergone major refurbishment works, including lots of new equipment and colourful new fences and gates.

A new waste bin has been installed outside Coastway Veterinary Practice. All waste bins are now dual purpose for rubbish and dog waste.

The Committee also manages the Civic Centre which provides a centre for the local community with a variety of support groups, exercise classes, meetings and social activities undertaken every day of the week. The downstairs kitchen has been refurbished, electrical works are being carried out and redecoration is due to take place to keep the Civic Centre a pleasant and inviting building for the community and hirers.

The Committee also oversees organisation of the very popular firework display on Telscombe Tye, as well as other community events such as the monthly bingo evenings (now in their 12th year), kids Halloween party, Macmillan coffee morning and Christmas Day coffee morning. This year commemorative events took place, such as the unveiling of a plaque by the entrance to the Civic Centre for the Telscombe Cliffs Airfield and the raising of the Red Ensign flag for Merchant Navy Day

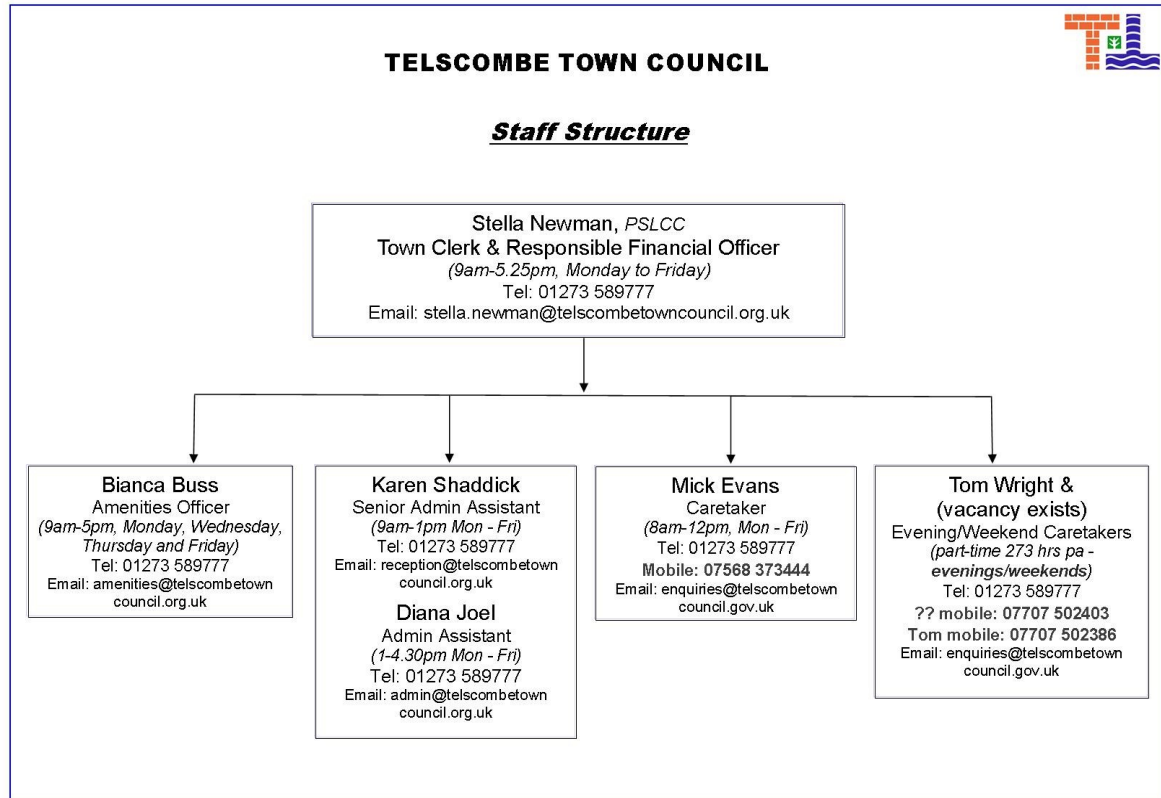
## **Planning & Highways Committee**

The Planning and Highways Committee meets on a 3 weekly cycle. Telscombe Town Council is purely a consultee for applications and the final decision is made by Lewes District Council. Planning applications considered by the committee during the past 12 months totalled 87, 3 of which were tree applications and 2 for Southern Water's Portobello installation. To date 37 have been approved by LewesDC, 13 refused, 1 was withdrawn, 2 were certification for lawful development and 29 are still awaiting a decision.

The Committee are also responsible for matters concerning Council owned assets, such as bus shelters, street lights and grass verge cutting, as well as the Neighbourhood Plan and liaising between residents and ESCC and other bodies on issues connected the to public highways.

The tree planting scheme will be implemented at the beginning of the next planting season.

# Meet the Staff



Town and parish councils are legally required to have a Proper Officer and Responsible Financial Officer (RFO). The Town Clerk is the proper officer and RFO for Telscombe Town Council. The RFO administers the Council's financial affairs in accordance with all Acts, Regulations and proper practices. The Clerk is not an elected member, but an employee of the Council and is responsible for implementing the Council's decisions.

The Town Clerk is supported by a senior admin assistant who works mornings and an admin assistant in the afternoons, as well as an Amenities Officer who currently works 3 days a week, but will shortly be increasing to 4 days.

Three part-time caretakers are employed to look after the Civic Centre during the day, evenings and weekends.



# Finance



The Council has built a reputation for sound financial management over recent years and has developed a financial strategy that has value for money at its core – making sure every penny counts.

We continue to ensure that decisions around service priorities are supported by the resources needed and to make sure that we continue to deliver the high quality services our community needs. Our financial strategy is underpinned by the strong foundation of the Council's reserves and balances that ensure we are able to deal with any unplanned eventualities as and when they may arise.

The Income & Expenditure accounts for the 2018/19 financial year are below.

Telscombe Town Council		
Income and Expenditure Account for Year Ended 31st March 2019		
31st March 2018		31st March 2019
	<b>Income Summary</b>	
223,232	Precept Received	231,252
104	Interest Received	572
<u>223,336</u>	Sub Total	<u>231,824</u>
	<b>Operating Income</b>	
34,878	General Administration	23,006
0	Telscombe Village Club	0
1,525	Town Events	190
1,842	Parks, Open Spaces/Playgrounds	91,893
0	Amenities General	0
34,122	Civic Building	31,215
11,950	Planning and Highways	29,551
<u>307,654</u>	Total Income	<u>407,680</u>
	<b>Running Costs</b>	
149,780	General Administration	148,522
5,675	Grants	6,490
0	Section 137	0
700	Telscombe Village Club	0
6,210	Town Events	6,134
26,631	Parks, Open Spaces/Playgrounds	130,426
190	Amenities General	2,021
29,193	Civic Building	33,670
11,049	Civic Building Loan	10,626
20,729	Planning and Highways	18,489
0	Loans	0
13,108	Earmarked Reserves	111,006
<u>263,265</u>	Total Expenditure	<u>467,383</u>
	<b>General Fund Analysis</b>	
156,340	Opening Balance	129,829
307,654	Plus : Income for Year	407,680
<u>463,994</u>		<u>537,508</u>
263,265	Less : Expenditure for Year	467,383
<u>200,729</u>		<u>70,125</u>
70,900	Transfers TO / FROM Reserves	-27,475
<u>129,829</u>	Closing Balance	<u>97,600</u>



## **COUNCIL TAX**

Council tax is a tax on the occupiers or owners of domestic properties such as houses and flats.

We are committed to keeping any necessary council tax increases to a minimum, especially in the current challenging economic climate and have worked hard to minimise unnecessary additional financial burdens on our residents. We established a 0% increase in the Town Council's precept for the last 6 years and are pleased to confirm that due to an increase in the tax base we have achieved a 0.1% reduction, or -£0.05p in Council Tax for a Band D property for the forthcoming financial year 2019/20.



The aim of the Council's small grants scheme is to promote an active local community. The Town Council supports local voluntary and charitable organisations across a wide range of activities through this scheme. These organisations provide valuable services and support to local residents and help enhance the entire community of Telscombe Town. The maximum payable is £500.

The Council has given grants to the following organisations during the 2018/19 financial year:-

Newhaven Cricket Club; Peacehaven & Telscombe Cliffs Scout Group  
Peacehaven & Telscombe Flower Club; Peacehaven Players  
Peacehaven & Telscombe Housing Association; Sailhaven;  
Telscombe Residents Association; 1st Telscombe Cliffs Guides &  
Peacehaven Senior Section;  
2nd Peacehaven Brownies; Deans Senior Tea Club;  
Peacehaven Horticultural Society; Telscombe Cliffs Primary School;  
Telscombe Cliffs & Peacehaven Breast Cancer Support;  
Telscombe Cliffs Women's Institute

There is also a separate grant provision which is given to the Citizens Advice Bureau of £3,490 and a payment of £1,500 is made to Wave Leisure for their summer activities.



Community involvement is paramount to the Town Council. The Council has five outside notice boards across the Town and in Telscombe Village. These are used to advertise forthcoming Council meetings and community events. The Council also publishes and delivers to households in its area a quarterly newsletter called The Town Crier which gives details of Council meetings, local news and events. The Town Crier is distributed free to properties within the Council's area of East Saltdean, Telscombe Cliffs and Telscombe Village, as well as having copies available in local shops and restaurants. The newsletter is also published on the Council's website, along with any other up-to-date news. The use of social media also ensures that the Council can communicate promptly with residents.

The Council lays on several functions for the public over the year and also arranges an annual visit for local school children to visit the community flock of sheep.

The Telscombe Residents' Association meets monthly at the Telscombe Civic Centre with the group having Councillor representation.



The Saltdean Resident's Association which covers both East and West Saltdean also meet monthly and has Councillor representation.

The Council are pleased to provide financial support to the Citizens Advice Bureau who have a representative for the public to meet and give advice to at the Civic Centre on the last Tuesday of the month from 10.30am-12.30pm.

We also provide financial support, along with other local Councils, to enable the 4 Towns Community Bus to operate in our area. The bus currently operates between 7.30 am & 5.30 pm week days. Residents use the bus for visits to the Post Office, Library, Doctors, Day Centres, Clubs, friends and for shopping.

CTLA also provide a cost effective service for Community Group hire and several groups are currently registered in Telscombe for this facility. CTLA Travel Club members enjoy regular trips out. For further details telephone 01273 517332.

# TELSCOMBE CIVIC CENTRE



The Civic Centre provides a focus for the community and is the venue for Civic events, Councillor surgeries and private and community events. Council and Committee meetings are also held in the Civic Centre. The Council continues to invest in upgrading and renewing facilities at the Centre and in the last year have fitted new fire escapes.

## **Civic Centre Reception**

The Town Council operates a reception and enquiries point between 9.00am and 4.30pm Monday to Friday. In addition to being able to book rooms for meetings and functions in the Civic Centre, staff will assist in answering queries and provide contact details in respect of services provided by the District and County Councils.

Phone: 01273 589777 Email: [enquiries@telscombetowncouncil.gov.uk](mailto:enquiries@telscombetowncouncil.gov.uk)

A notice board and display stands are available for local groups to display details of their events and services in the reception area.







### Civic Centre Room Hire

The Centre offers a wide range of modern, attractive, flexible yet affordable accommodation for hire. It can provide an ideal room for a small meeting, exercise class, business meeting, training course or a large function such as an exhibition, wedding reception or party. It also has a private patio area. The Civic Centre has a well-equipped kitchen for self-catering events. Reduced hire charges are available for local charitable groups. Please contact the reception desk for booking information on 01273 589777.





***Check out our website  
[www.telscombetowncouncil.gov.uk](http://www.telscombetowncouncil.gov.uk)***

