

Telscombe Town Council Annual Report 2019-2020



**Telscombe Civic Centre, 360 South Coast Rd, Telscombe Cliffs,
East Sussex, BN10 7ES
01273 589777**

**enquiries@telscombetowncouncil.gov.uk
www.telscombetowncouncil.gov.uk**

CONTENTS

Page 3	Mayor's Report
Page 4	Councillors
Page 5	Understanding How Councils Work
Page 6	Telscombe Town Council & Committees
Page 7	Committees
Page 8	Committees & Neighbourhood Plan
Page 9	Neighbourhood Plan
Page 11	Staff
Pages 12 & 13	Finance
Page 14	Community Engagement
Pages 15 & 16	The Civic Centre

A Message from the Mayor, Cllr Isobel Sharkey

I know that every Mayor probably says this, but it really has been an honour to serve as Mayor for Telscombe Town during the past year; it has also been a very enjoyable experience.

First of all there were a number of formal events, including commemoratives ones, attended by other Mayors and various dignitaries.

The mayor-making ceremony for the Lewes Town Mayor, The D-Day ceremony and lunch in Peacehaven, The Peacehaven Mayor's thanksgiving service, meeting of mayors with the Lord Lieutenant, the High Sheriff's reception, Armed Forces day in Seaford, the Dieppe memorial service and lunch in Newhaven, the Victory over Japan memorial service in Peacehaven, the Merchant Navy Day flag raising at Telscombe Civic Centre, the Judges service and reception in Lewes, the Remembrance Sunday parade in Peacehaven, the prayer breakfast hosted by the High Sheriff, 4 carol concerts in Peacehaven, Telscombe Cliffs, Newhaven, and Telscombe Village.

Then there were a number of less formal community events: A CTLA volunteer's lunch in Newhaven, The Peacehaven Players production of The Perfect Wedding, The Peacehaven and Telscombe Scout barbecue and AGM, two interviews on Seahaven FM Community People show, the Blind Veteran's art exhibition, the Deans Senior Tea Club, the Peacehaven Players pantomime and Christmas lunch at Kempton House.

Lastly, there have been a number of fund-raising events. Out of town ones were - the Peacehaven summer fair, the mayor of Seaford's reception, a curry evening in Peacehaven, a Prince's Treasure exhibition at the Brighton Pavilion, the Royal Society of St George's 100th anniversary lunch in Seaford and the African night in Peacehaven. Here in Telscombe there has been - the Macmillan coffee morning, the Council's dog show and children's Halloween party, the Telscombe Resident's Association Race Night, a Mama Mia sing-along evening and, of course, the monthly bingo nights.

I was accompanied at some of these events by my consort, Brent, or when he couldn't make it for health reasons, my teenage stepson Busta made an excellent substitute and my 2 young foster-granddaughters really enjoyed the 3 events they attended with me.

I'd like to thank all of my fellow Councillors who have supported me during this year in many ways, as have all of the officers and staff at the Civic Centre.

Cllr Isobel Sharkey
Mayor of Telscombe

April 2020



Councillors

The Town Council has 13 Councillors, eight in the Telscombe Cliffs Ward:-



Cllr Daryll Brindley
07917 393050



Cllr Claude Cheta
07869 069332



Cllr Ciarron Clarkson
01273 024717



Cllr Job Harris
01273 583050



Cllr Gloria Hill
01273 579305



Cllr Lyn Mills
07976 910182



Cllr Isobel Sharkey
07818 243405



Cllr Andy Smith
01273 584484

and five in the East Saltdean ward:-



Cllr Cathy Gallagher
07810 560337



Cllr Laurence O'Connor
01273 309444



Cllr Brian Page
01273 302220



Cllr David Judd
07729 817558



Cllr Christine
Robinson
01273 579613

New Councillors were elected in May 2019, some of which had served the Town previously. They will stay in office for 4 years.

Councillors O'Connor and Robinson were also elected as Lewes District Councillors for the Telscombe Town area. Cllr Smith is an East Sussex County Councillor for this area.

The Mayor is appointed at the Annual Council meeting in May. Councillor Isobel Sharkey was appointed as Mayor and Councillor Daryll Brindley as Deputy Mayor in May 2019 for the 2019/20 year.

A Councillors' surgery is held on the first Saturday of each month from 10-11am at the Telscombe Civic Centre where you can pop in (no appointment necessary) and meet your local Councillors and discuss any issues or thoughts with them.

Understanding How Councils Work

There are three tiers of local government:-

County Councils

District, Borough or City Councils

Parish, Community and Town Councils

In some parts of the country, mainly cities, there's just 1 (unitary) tier of local government providing all the local services.

County Councils

They are responsible for services across the whole of a county, eg:

- * education
- * transport
- * fire and public safety
- * social care
- * libraries
- * waste management
- * trading standards

District, Borough and City Councils

They cover a smaller area than County Councils. They're usually responsible for services like:

- * rubbish collection
- * recycling
- * Council Tax collections
- * housing
- * planning applications

Parish, Community and Town Councils

They operate at a level below District and Borough Councils and in some cases, unitary authorities.

They're elected and can help on a number of local issues and can provide:

- * allotments
- * public clocks
- * bus shelters
- * community centres
- * play areas and play equipment
- * grants to help local organisations
- * consultation on neighbourhood planning

In our area we have East Sussex County Council, Lewes District Council and Telscombe Town Council.

```
graph TD; FC[Full Council] --> PHC[Planning & Highways Committee]; FC --> ACC[Amenities & Civic Centre Committee]; FC --> PRC[Policy & Resources Committee]; PRC --> SC[Sub Committees: Audit, Employment, Grants];
```

The organizational chart illustrates the hierarchy of committees under the Full Council. At the top is the **Full Council**, which oversees three main committees: the **Planning & Highways Committee**, the **Amenities & Civic Centre Committee**, and the **Policy & Resources Committee**. The **Policy & Resources Committee** further oversees three sub-committees: **Audit**, **Employment**, and **Grants**.

Local Councils have a range of powers and duties including the power to provide and maintain bus shelters of which Telscombe Town Council has several and to light public places. Telscombe Town Council has several lighting columns, including those along the pathway in Chatsworth Park.

The various aspects of the Councils responsibilities and activities are undertaken by various committees detailed above.

Council and Committee meetings are held on a bi-monthly basis. A list of meetings dates can be found on our website or in our notice boards.

Policy & Resources Committee

I would like to start the Policy and Resources (P&R) annual report by thanking the Council staff for all their support and hard work in the previous year especially considering the recent events. Additionally, I would like to thank all Councillors for their commitment and openness to work together on new projects and ideas.

The community flock has been successfully wound down following public consultation. The flock had been a sensitive topic for many residents and Councillors for a long time and I am pleased to see it has been concluded. A handful of our older ewes were even successfully rehomed which has been wonderful. No longer maintaining a flock allows total transparency between the residents, Council and tenant of Stud Farm.

The most notable developments from P&R are Cllr Robinson and the Town Clerk's progress with seeking expert advice on devising and implementing a management plan for the Tye. They have successfully engaged with residents who have valuable input as well as professional land management businesses and a plan is being progressed. The Councillors all recognise the importance of the Tye, not only as an asset for the town and its residents, but also as part of the unique habitat that is the Sussex Downs. Without Cllr Robinson and the Town Clerk's efforts we would be no further to revitalising this area.

I will close by saying it has been a pleasure to chair this committee especially when we have had issues residents feel engaged with. I hope the good work we have started this past year continues and that in the meantime everyone stays safe and well.

Cllr C Clarkson, Chairman of Policy & Resources Committee

The Policy & Resources Committee has three sub-committees, being Audit, Employment and Grants.

A list of the grants awarded by the Council for the 2019-20 financial year are listed on page 13 under the Finance Section of this report.

Amenities & Civic Centre Committee

Telscombe Town is fortunate to have great public green spaces and Chatsworth Park, The Copse and Robert Kingan playground in East Saltdean are the responsibility of this Committee.

By working with Community Volunteers we intend to enhance the existing facilities and improve the bio-diversity by recording and mapping the existing trees and plants and managing the open spaces to counteract any long term neglect.

Encouraging more use of our greenspaces has included the formation of Telscombe Town Tree Wardens and the Chatsworth Park Working Group who are discussing and making plans for how to maintain and improve Chatsworth Park. They will work with the Friends of Chatsworth Park. The Council are also starting projects with local schools to build and home bee hotels in the Park and actively working with forest schools to increase use of Chatsworth Park.

We have formed a Chatsworth Park Café Working Group exploring the feasibility of bringing a café and public toilets to Chatsworth Park. The Group benefits from having membership of ESCC and LDC Councillors. Unfortunately the Covid 19 Emergency has delayed this project, however, a concession pack has been drawn up to attract a vendor from Spring 2021. There will be public consultations and finances to be put in place throughout the next 12 months.

Keep Telscombe Town tidy and litter free remains a Town Council objective, the provision of dual waste bins and educational notices are plentiful.

With support from residents and adhering to Climate Emergency guidelines we will improve air quality and help reduce global warming.

The Civic Centre is the Community Hub, it is bright, clean and warm. Available for hire as well as being the administrative and civic Office. By carrying out timely and regular repairs the building is maturing well.

Events are managed by this Committee and there have been some changes in recent months as a result of the increasing awareness of the damaging aspects of Climate Change and concerns about animal welfare.

To mention just 2 events, in the late Summer of 2019 we held a Dog Show in Chatsworth Park. This proved very popular and we hope to repeat it in 2020. Bingo remains ever popular which raises funds for the Mayor's charities. It is held on the last Friday of the month.

Cllr C Gallagher, Chairman of Amenities & Civic Centre Committee

Planning & Highways Committee

The Planning & Highways meetings are held approximately every three weeks. Telscombe Town Council is consulted by Lewes District Council, the Planning Authority, on planning applications but we are however only statutory consultees in the planning process. This means that we only have the right to be informed of planning applications as the final decision is made by the Planning Authority and not the Town Council.

Planning applications considered by the committee during the past 12 months totalled 69 of which 53 have been approved by Lewes DC, 7 refused and 9 are still awaiting a decision. There were also 8 planning decisions made where we were not notified or consulted.

The Committee are also responsible for matters concerning Council owned assets such as bus shelters, some street lights, grass verge cutting, the Peacehaven & Telscombe Neighbourhood Development Plan as well as liaising between residents and ESCC and other bodies on issues connected to the public highways.

The Committee are also working closely with ESCC Highways to extend the verge tree planting scheme to all residents of Telscombe and East Saltdean and we are awaiting to hear back of expressions of interest before progressing this further.

We are also committed to improve the biodiversity of our local area as well as encouraging habitats for bees, butterflies and insects by introducing wildflowers to our verges in certain areas. This is still in the early stages and we hope to work alongside residents with this scheme.

Cllr C Robinson, Vice-Chairman of Planning & Highways Committee on behalf of the Chairman, Cllr J Harris

Neighbourhood Development Plan

THE VISION

Is for Peacehaven and Telscombe Towns to be sustainable, with clean air and an environment which provides a good quality of life for all inhabitants.

KEY OBJECTIVES

- 1. A refocused Town Centre on the Meridian Site including retail, leisure and food and drink outlets, small business units and essential for sustainable living.**
- 2. Safe pedestrian walk ways, cycle paths to access all areas within the built-up areas and the countryside.**
- 3. New housing aimed at local needs including low cost, long term rentals.**

Neighbourhood Development Plan (Contd)

BACKGROUND

Telscombe Town which covers East Saltdean, Telscombe Cliffs and Telscombe Village is mainly residential with Telscombe Tye common land lying within the South Downs National Park.

Over 1000 new homes have been approved and are either built (or soon will be) in Peacehaven, with a further 255 homes to be allocated to land in Peacehaven and Telscombe by 2030.

Through the Neighbourhood Development Plan (NDP), local Councils are able to influence planning in their area through consultation with residents.

The NDP once in place is a legal document and carries the same weight in Planning Policy as the Lewes District Core Strategy Plan.

The Journey so far

Throughout April 2018 a public consultation took place “First Conversation” with exhibitions in East Saltdean, Peacehaven and Telscombe.

The feedback confirmed:-

“Redevelopment of the Meridian Centre with additional retail space was a priority for the Community”

Major concerns: Congestion, infrastructure, loss of Green spaces and shops

Major Assets: Heritage, Gateway to South Downs National Park, Cliff Tops, SSSI, Marine Conservation and the Biosphere, Network of Green Spaces and Parks.

THE PRESENT

Behind the scenes reports and research is taking place and a draft plan will be available in a few months’ time. A Government Inspector will examine all of our evidence and research and will ensure that residents are supportive.

The Meridian Centre is the designated retail centre and will remain so, but in creating a new Town Centre the vision is for a mix of land use on the Meridian site. The Co-op Group wish to sell their land and build a new modern store on the site. To date, although potential buyers have been identified, contracts have not been agreed. Consultation on local views about the future of the Meridian Site continue to take place.

Volunteers who wish to be involved and offer their knowledge and skills please make contact. You can help by looking out for and participating in surveys and workshops.

Cathy Gallagher

Chair of Steering Group

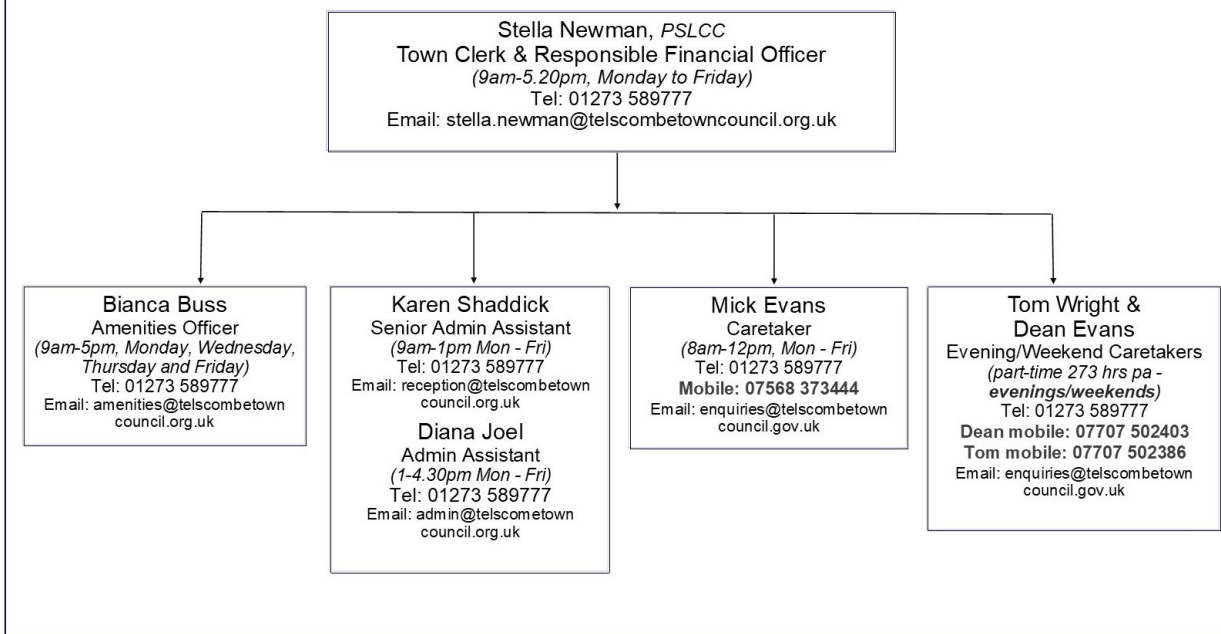
Email ptsteergroup@yahoo.com

www.peacehaven-and-telscombe-neighbourhood-plan-steering-group.co.uk

Meet the Staff

TELSCOMBE TOWN COUNCIL

Staff Structure



Town and parish councils are legally required to have a Proper Officer and Responsible Financial Officer (RFO). The Town Clerk is the proper officer and RFO for Telscombe Town Council. The RFO administers the Council's financial affairs in accordance with all Acts, Regulations and proper practices. The Clerk is not an elected member, but an employee of the Council and is responsible for implementing the Council's decisions.

The Town Clerk is supported by a senior admin assistant who works mornings and an admin assistant in the afternoons, as well as an Amenities Officer who works 4 days a week.

Three part-time caretakers are employed to look after the Civic Centre during the day, evenings and weekends.

Finance

The Council has built a reputation for sound financial management over recent years and has developed a financial strategy that has value for money at its core – making sure every penny counts.

We continue to ensure that decisions around service priorities are supported by the resources needed and to make sure that we continue to deliver the high quality services our community needs. Our financial strategy is underpinned by the strong foundation of the Council's reserves and balances that ensure we are able to deal with any unplanned eventualities as and when they may arise.

The Income & Expenditure accounts for the 2019/20 financial year are below.

Telscombe Town Council

Income and Expenditure Account for Year Ended 31st March 2020

31st March 2019		31st March 2020
Income Summary		
231,252	Precept Received	225,417
<u>572</u>	Interest Received	<u>803</u>
<u>231,824</u>	Sub Total	<u>226,220</u>
Operating Income		
23,006	General Administration	40,301
190	Town Events	1,186
91,893	Parks, Open Spaces/Playgrounds	3,850
31,215	Civic Building	31,371
<u>29,551</u>	Planning and Highways	<u>9,244</u>
<u>407,680</u>	Total Income	<u>312,172</u>
Running Costs		
148,522	General Administration	162,270
6,490	Grants	5,860
6,134	Town Events	3,179
130,426	Parks, Open Spaces/Playgrounds	28,380
2,021	Amenities General	970
33,670	Civic Building	31,034
10,626	Civic Building Loan	10,203
18,489	Planning and Highways	11,662
<u>111,006</u>	Earmarked Reserves	<u>22,739</u>
<u>467,383</u>	Total Expenditure	<u>276,297</u>
General Fund Analysis		
129,829	Opening Balance	97,600
<u>407,680</u>	Plus : Income for Year	<u>312,172</u>
537,508		409,772
<u>467,383</u>	Less : Expenditure for Year	<u>276,297</u>
70,125		133,475
<u>(27,475)</u>	Transfers TO/ FROM Reserves	<u>42,691</u>
<u>97,600</u>	Closing Balance	<u>90,784</u>



Council tax is a tax on the occupiers or owners of domestic properties such as houses and flats.

We are committed to keeping any necessary council tax increases to a minimum, especially in the current challenging economic climate and have worked hard to minimise unnecessary additional financial burdens on our residents. We established a 0% increase in the Town Council's precept for several years.

For the forthcoming financial year 2020/21 Telscombe Town Council's portion of the council tax has increased by 6.1% or £5.48 monthly for a Band D property. This was mainly due to the cessation of the Revenue Support Grant previously received from Lewes District Council.



The aim of the Council's small grants scheme is to promote an active local community. The Town Council supports local voluntary and charitable organisations across a wide range of activities through this scheme. These organisations provide valuable services and support to local residents and help enhance the entire community of Telscombe Town. The maximum payable is £500.

The Council has given grants to the following organisations during the 2019/20 financial year:-

CTLA, Develop Outdoors CIC, Four Deans Stroke Club, Kempton House Day Centre, Peacehaven Horticultural Society, Sailhaven, Saltdean & Rottingdean Youth Club, Telscombe Cliffs WI, Telscombe Residents Association and Telscombe Village Club

There is also a separate grant provision which is given to the Citizens Advice Bureau of £3,490 and a payment of £1,500 was made to Wave Leisure for their summer school activities.

Community



Community involvement is paramount to the Town Council. The Council has five outside notice boards across the Town and in Telscombe Village. These are used to advertise forthcoming Council meetings and community events.

The Council also publishes and delivers to households in its area a quarterly newsletter called The Town Crier which gives details of Council meetings, local news and events. The Town Crier is distributed free to properties within the Council's area of East Saltdean, Telscombe Cliffs and Telscombe Village, as well as having copies available in local shops and restaurants. The newsletter is also published on the Council's website, www.telscombetowncouncil.gov.uk, along with any other up-to-date news. The use of social media also ensures that the Council can communicate promptly with residents.

The Council lays on several functions for the public over the year and we held our first fun dog show in Chatsworth Park in September.



Telscombe Town Council has appointed Councillors to serve on several outside bodies including:-

- * The Telscombe Residents' Association who meet monthly at the Telscombe Civic Centre.
- * The Saltdean Resident's Association which covers both East and West Saltdean
- * The Citizens Advice Bureau who have a representative for the public to meet and give advice to at the Civic Centre on the last Tuesday of the month from 10.30am-12.30pm
- * The Community Transport for Lewes Area (CTLA) who provide the 4 Towns Community Bus operating in our area
- * Age Concern
- * The British Legion
- * Crimestoppers
- * The Joint Action Group
- * Lewes District Association of Local & Parish Councils
- * Peacehaven & Telscombe Housing Association
- * Peacehaven & Telscombe Towns Forum,
- * The South Downs Land Management Group

Telscombe Civic Centre



The Civic Centre provides a focus for the community and is the venue for Civic events, Councillor surgeries and private and community events. Council and Committee meetings are also held in the Civic Centre.

The Council continues to invest in upgrading and renewing facilities at the Centre and has recently undertaken internal redecoration.

We are pleased to support the FareShare foodbank and have a food collection basket in the foyer at the Civic Centre.

FareShare are the UK's largest charity fighting hunger and food waste. They redistribute surplus food to charities, including homeless hostels, children's breakfast clubs, lunch clubs for older people, domestic violence refuges and community cafés.



Civic Centre Reception

The Town Council operates a reception and enquiries point between 9.00am and 4.30pm Monday to Friday. In addition to being able to book rooms for meetings and functions in the Civic Centre, staff will assist in answering queries and provide contact details in respect of services provided by the District and County Councils.

Phone: 01273 589777 Email: enquiries@telscombetowncouncil.gov.uk

A notice board and display stands are available for local groups to display details of their events and services in the reception area.



Civic Centre Room Hire

The Centre offers a wide range of modern, attractive, flexible yet affordable accommodation for hire.

It can provide an ideal room for a small meeting, exercise class, business meeting, training course or a large function such as an exhibition, wedding reception or party. It also has a private patio area. The Civic Centre has a well-equipped kitchen for self-catering events.

Reduced hire charges are available for local charitable groups.

Please contact the reception desk for booking information on 01273 589777.





***Check out our website
www.telscombetowncouncil.gov.uk***

Email us - enquiries@telscombetowncouncil.gov.uk

